

ISS
International Space Stn



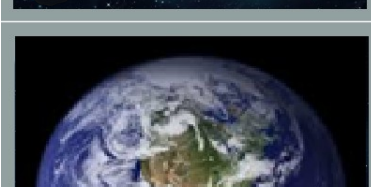
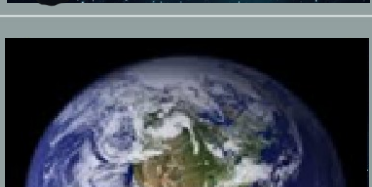
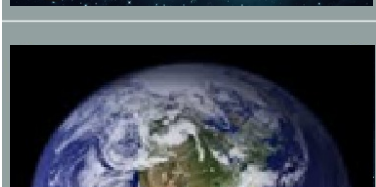
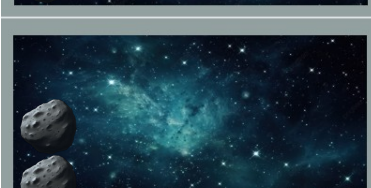
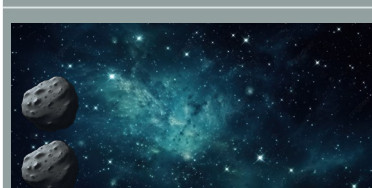
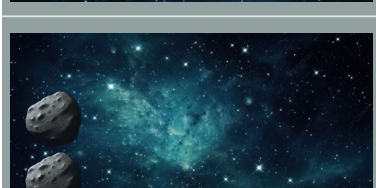
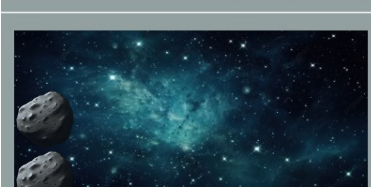
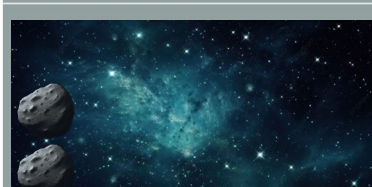
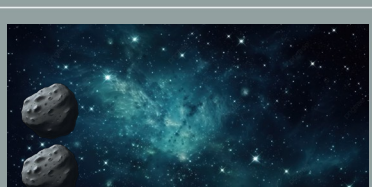
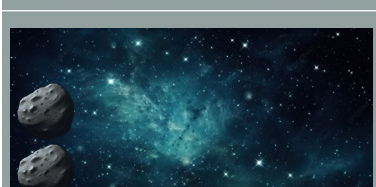
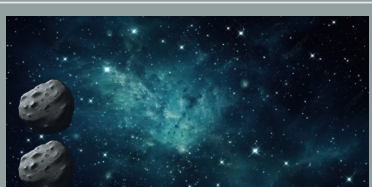
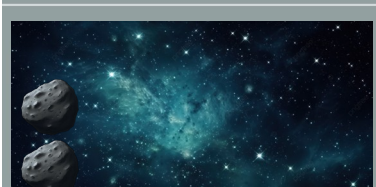
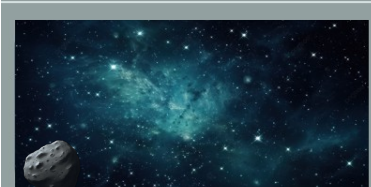
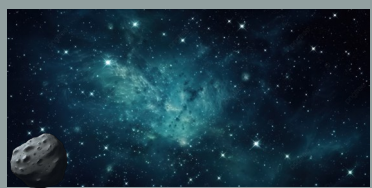
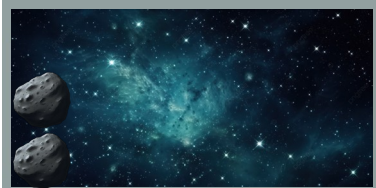
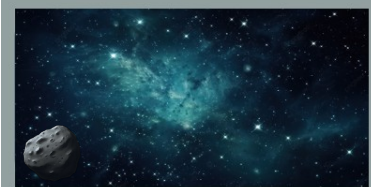
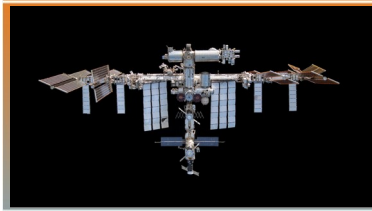
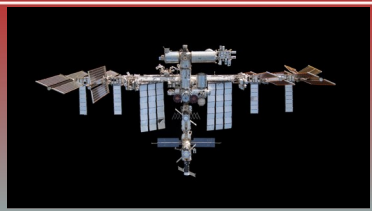
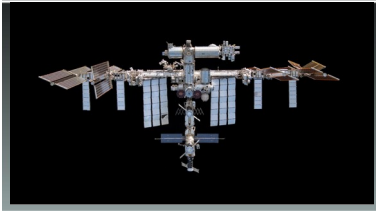
ISS
International Space Stn



ISS
International Space Stn



ISS
International Space Stn



International Space Station

ISS



The International Space Station photographed by Expedition 56 crew members. CC BY-NC-ND 2.0

The International Space Station (ISS) is a large space station that was assembled and is maintained in low Earth orbit by a collaboration of five space agencies and their contractors: NASA (United States), Roscosmos (Russia), ESA (Europe), JAXA (Japan) and CSA (Canada). As the largest space station ever constructed, it primarily serves as a platform for conducting scientific experiments in microgravity and studying the space environment.

ALT: 413 km
RWY: 413 km
A/Y: 4



Tavener Airlines


ISS International Space Station


General Rules

Inertia: instead of normal movement rules, use counters or a die to track your velocity. If your Engine dice are below the blue marker, reduce your velocity; if your Engine dice are above the orange marker, increase your velocity; then move on the track a number of spaces equal to your velocity.



Space Debris: to remove a piece of debris, both players must put the same number in the Radio; this represent targeting for your lasers. If you collide with debris, take an Alarm token. If cannot take an Alarm token, you lose.

Green (10 )

Yellow (8 )

Red (6 )

Black (4 )

Tavener
Airlines



BOARDING PASS